



OWN THE
FUTURE

COMMERCIAL PLOTS AVAILABLE

Welcome to the central commercial area of the Lagos New Town district. We have plots available for light industrial, warehousing, assembling and logistics purposes.

The commercial area plots are surrounded by notable residential estates like the Lakowe Lakes Golf and Country Estate, Beechwood Park, Beechwood Estate, Townsville Estate and Adiva Plainfields Estate. Situating your business within this area provides access to at least 5 major existing estates with over 25,000 residents.

PLOT SIZES AVAILABLE

2500sqm

5000sqm

10,000sqm



Lakowe
Golf & Country Estate



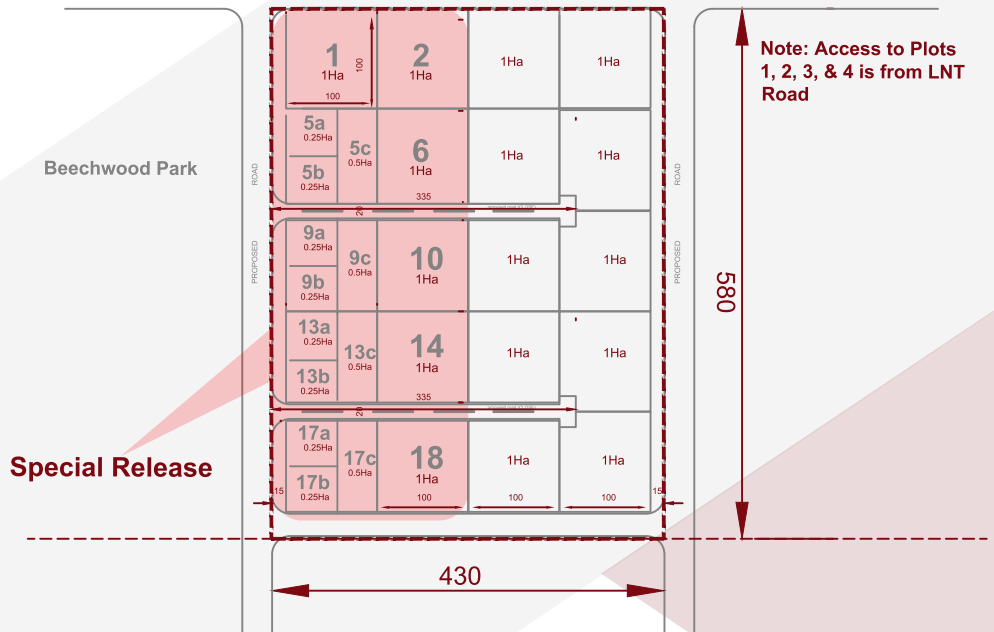
Beechwood Park



Adiva Plainfields
Estate



EXISTING LNT ROAD



Initial sales will include a special release of 10 plots from the mapped out commercial area above

LOCATION



Commuter time from the Commercial Plots to and from Free Trade Zone is estimated at a total of 20 minutes and less than 5 minutes to and from Lakowe Lakes Golf and Country Estate.



NEW TOWN PLOTS

IS EVERY SMART INVESTOR'S DREAM



FEATURES



Serviced plots



Uncontested
title deed



25 hectare
layout



6-month
payment plan



Concrete
road network



Attractive Return-On-
Investment (ROI)



ABOUT LAGOS NEW TOWN

Lagos New Town (LNT) is a Mixta Africa development that has experienced immense growth as a result of consistent infrastructure investments made over the years which has made it a prime area of interest for real estate investors. Presently, over 5000 development units have been sold and many more still in works. It is estimated to host over 200,000 residents.



ABOUT US

Mixta Africa, a subsidiary of ARM, is a leading infrastructure developer and real estate company focused on creating affordable housing solutions for the average African.

Founded in April 2005, Mixta Africa is an active player in the fast-growing African real estate sector. With offices in Morocco, Senegal, Tunisia, Cote d'Ivoire, Nigeria and past projects in Algeria, Mauritania and Egypt, we have successfully developed about 13,500 residential and retail units across the continent.



0814 481 0080
0809 952 4041



<https://mixtafrica.com>



@mixta.africa



mixtafrica@mixtafrica.com



@mixtaafrica



@mixta-africa