

Size: 90.2sqm

Middle Unit First Floor



ESTATE AMENITIES



Clubhouse



Gym



Multipurpose Hall



Swimming pool



Children's Play Area



Gated community

ABOUT THE DEVELOPER

13,500 housing units successfully completed

20+ years accumulated experience in infrastructure and real estate

15,000,000 sqm+ of Land Bank

Mixta Africa began its journey of building communities in April of 2005 with a vision to improve the face of Northern and West African infrastructure. 10 (Ten) years later in 2015, Asset & Resource Management Company (ARM), the largest non-bank financial institution in Nigeria acquired Mixta with over US\$3.5 billion under management, making it one of the largest indigenous real estate companies in Africa. Today, we are headquartered in Lagos, Nigeria with offices in 4 other African countries: Tunisia, Morocco, Cote d'Ivoire and Senegal and projects in 8 countries across the continent including Algeria, Mauritania and Egypt. With a development ready land bank of over 15 million sqm, we have successfully completed over 23 projects across Africa.

Mixta Africa has built a strong track record of reliability, durable structures and swift delivery of communities which has helped us sustain strong relationships spanning over 20 years and a continued trust from our customers across Africa.

0809 952 4041

sales.nigeria@mixtafrica.com

www.mixtafrica.com

A DEVELOPMENT BY
MIXTA AFRICA

MIXTA AFRICA

In Partnership with

fha MORTGAGE BANK LIMITED



Expressview Estate

A FRESH START





▪ This is an artist rendition and actual structure may differ slightly upon completion.

INTRODUCTION

In the heart of Lugbe, Abuja is the true definition of urban living for those who seek a dwelling to reflect their personality and aspirations.

With authentic modern designed 3 bedroom homes, Expressview estate is designed with your security, lifestyle preferences, needs and budget at heart.

LOCATION

Expressview Estate is just 15 minutes away from the airport, 20 minutes away from the Abuja city gate and 25 minutes away from the Central Business District (CBD).



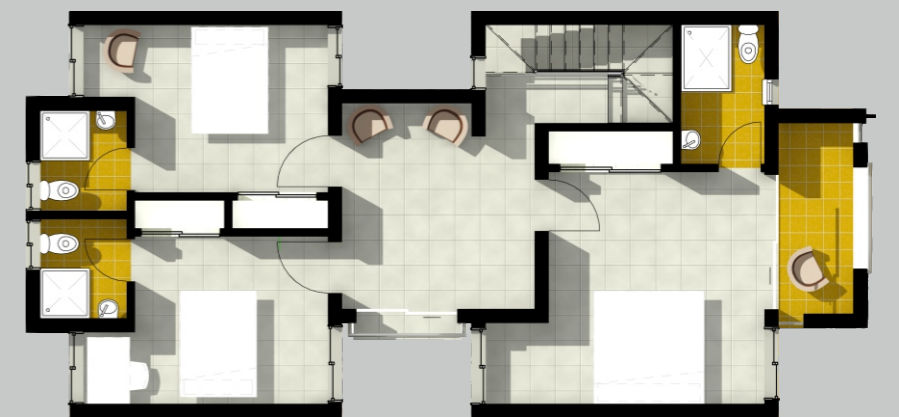
▪ This is an artist rendition and actual structure may differ slightly upon completion.

FLOOR PLAN



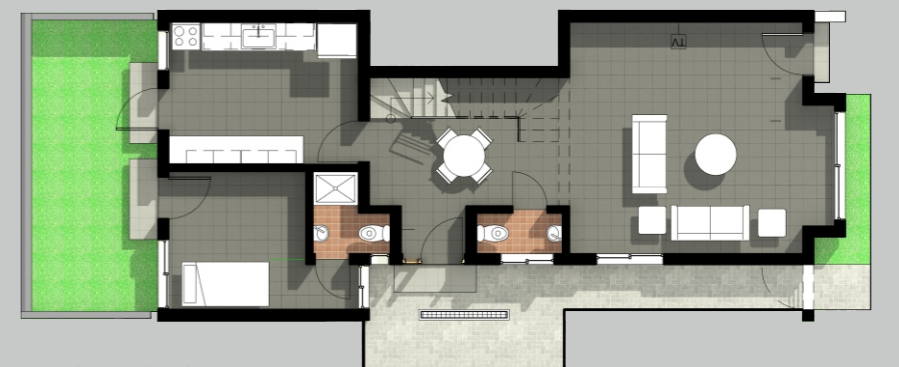
Size: 83sqm

Corner Unit Ground Floor



Size: 84sqm

Corner Unit First Floor



Size: 81.8sqm

Middle Unit Ground Floor