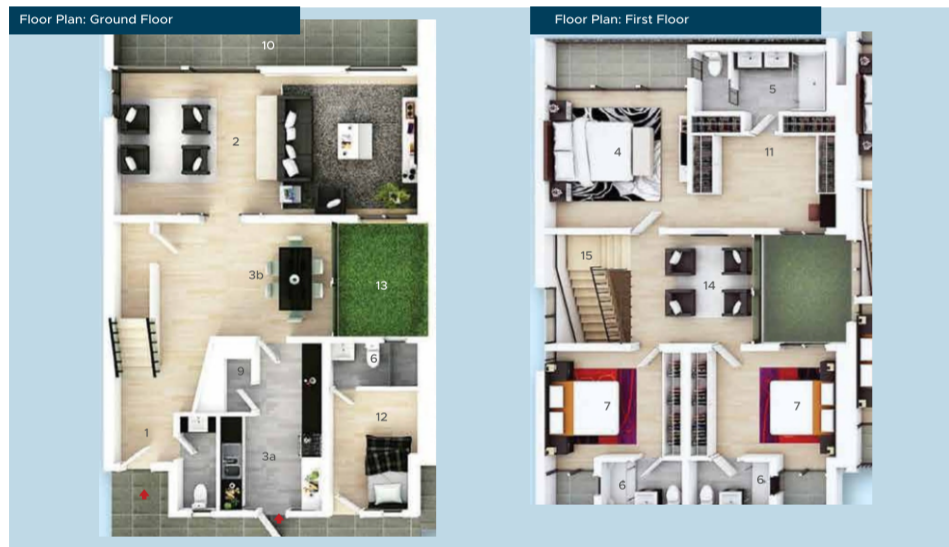




AGAVE

4 BEDROOM TERRACE



Approximate Ground Floor Area = 200 Sq.M

- | | | | | |
|--------------------------|----------------------------|-----------------|--------------------|----------------------|
| 1. Stair/Entrance Lobby | 3b. Dining | 7. Bedroom | 11. Walk-in closet | 15. Escape Staircase |
| 2. Living room | 4. Master Bedroom | 8. Guest toilet | 12. Maid's room | |
| 2b. Living room & Dining | 5. Master Bedroom Bathroom | 9. Pantry | 13. Courtyard | |
| 3a. Kitchen | 6. Bathroom and Toilet | 10. Terrace | 14. Family room | |

LIMITED UNITS AVAILABLE



COVE LOFTS



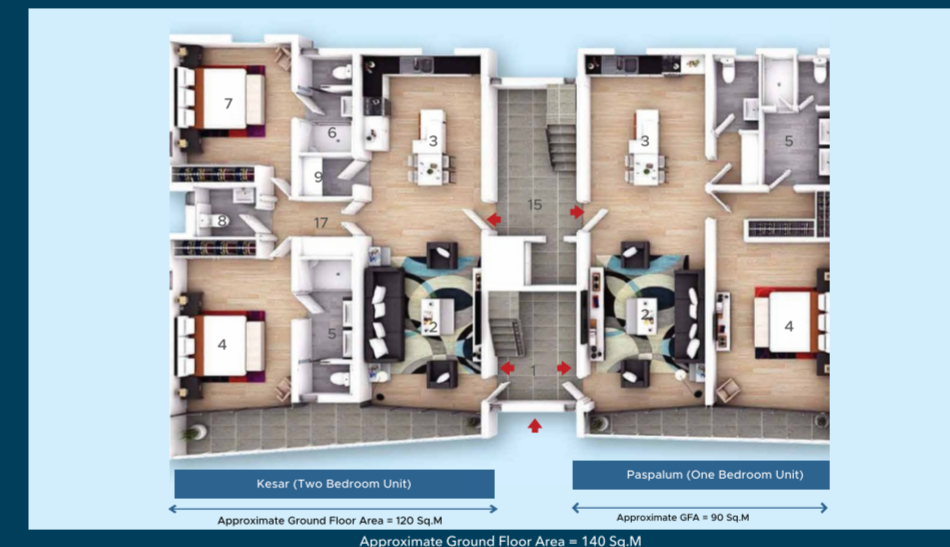
Approximate Ground Floor Area = 140 Sq.M

- | | | |
|------------------|-----------------------------|--------------------|
| 1. General Lobby | 5. Lounge | 9. Stairs |
| 2. Kitchen | 6. Void over General Lounge | 10. Bedroom |
| 3. Toilet | 7. Terrace | 11. Walk-in Closet |
| 4. Dining | 8. Study | 12. Toilet/Bath |



KESAR AND PASPALUM

1 & 2 BEDROOM LAKEFRONT APARTMENT



- | | | | | |
|--------------------------|----------------------------|------------------------|--------------------|----------------------|
| 1. Stair/Entrance Lobby | 3b. Kitchen | 6. Bathroom and Toilet | 10. Terrace | 14. Family room |
| 2. Living room | 3c. Dining | 7. Bedroom | 11. Walk-in closet | 15. Escape Staircase |
| 2b. Living room & Dining | 4. Master Bedroom | 8. Guest toilet | 12. Maid's room | |
| 3. Kitchen & Dining | 5. Master Bedroom Bathroom | 9. Pantry | 13. Courtyard | |

ABOUT THE DEVELOPER

We have been active in the development of housing communities across Africa for over two decades. With offices and projects in Morocco, Senegal, Tunisia, Côte d'Ivoire and Nigeria, we take pride in the fact that we remain one of the few real estate developers that successfully delivered over 11,000 housing units across Africa.

In 2015, Mixta Africa was acquired by Asset & Resource Management Company (ARM), the largest non-bank financial institution in Nigeria with over US\$3.5 billion under management. ARM since integrated Mixta Africa with its other subsidiaries such as ARM Pensions, ARM Life amongst other companies. All other Nigerian projects such as Fara Park Estate, Beechwood, and Lakowe Lakes and others which were noted for their high-quality infrastructure were combined and have since been executed by Mixta Africa. We have more than 109 experienced professionals across our subsidiaries that ensure delivery of our communities.



THE COVE AT LAKOWE LAKES

A Lifestyle In A Class Of Its Own

LAKOWE LAKES
GOLF AND COUNTRY ESTATE
A DEVELOPMENT BY MIXTA AFRICA



The Cove has everything you want in a home... and a little extra.

Welcome to The Cove. A community within the Lakowe Lakes estate that offers a lifestyle like no other. Nestled in a quiet, manicured corner of the exclusive Lakowe Lakes Golf & Country Estate, The Cove is our best development yet and it has been specially designed for a discerning few.

About Lakowe Lakes

Lakowe Lakes Golf & Country Estate, often described as 'West Africa's best kept secret', is a beautiful, luxury community nestled in a peaceful neighbourhood about 35km from the hustle and bustle of Lagos. Enjoy the natural beauty and serenity of our 308-hectare community of luxury houses, beautiful lakes, lush palm groves, spa and hospitality resort, sports facilities, and an 18-hole championship golf course. An imposing 55 hectare man-made lake is the centrepiece of the entire development. The community was designed by a team of award-winning professionals, and is

strategically located on the Lekki corridor, and bordered on the south by the Atlantic Ocean. The nature inspired hospitality Cross section of some homes Hospitality Cottages Aerial view of the Golf Course resort at Lakowe Lakes consists of a Corporate Lodge Facility and a planned Spa Resort and seeks to promote wellness, relaxation, and recreation. Upon completion, the Spa Resort will include 63 units comprising of studio, one-bedroom, and two-bedroom villas, a full service Spa and Wellness Facility, and a specialty restaurant.

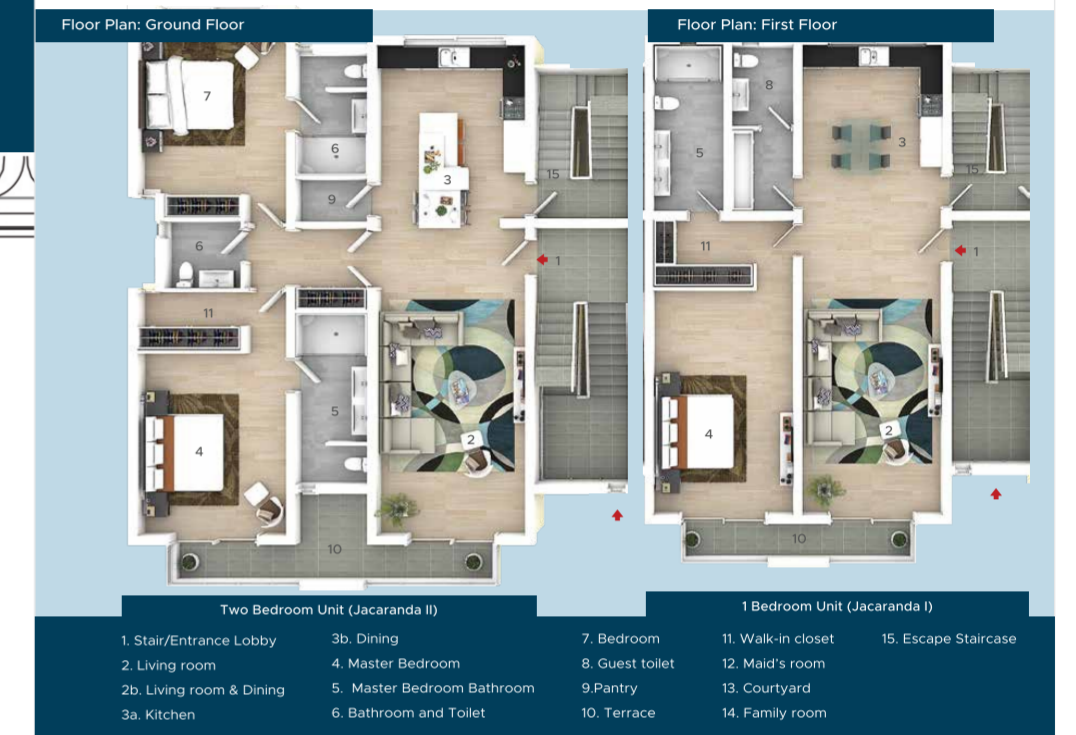


Hospitality Cottages



Cross section of some homes

The Cove Layout



Homes in The Cove

The Cove is designed for you to become one with nature. There are a range of different home types you can choose from: 1, 2- or 3-Bedroom apartments or the 3 Bedroom Terraces plus maid's room. The homes come with fantastic views of either the stately man-made lakes or well-manicured garden views.

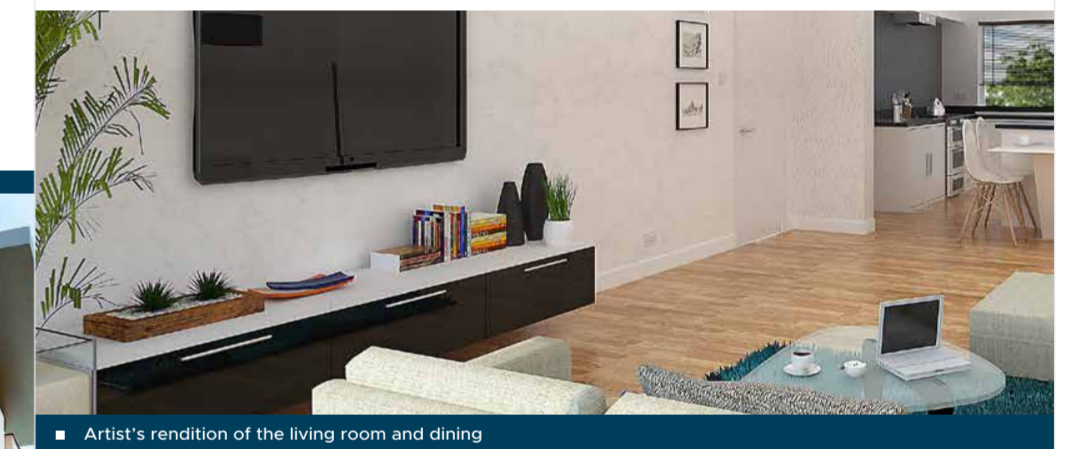


1

2



3



4